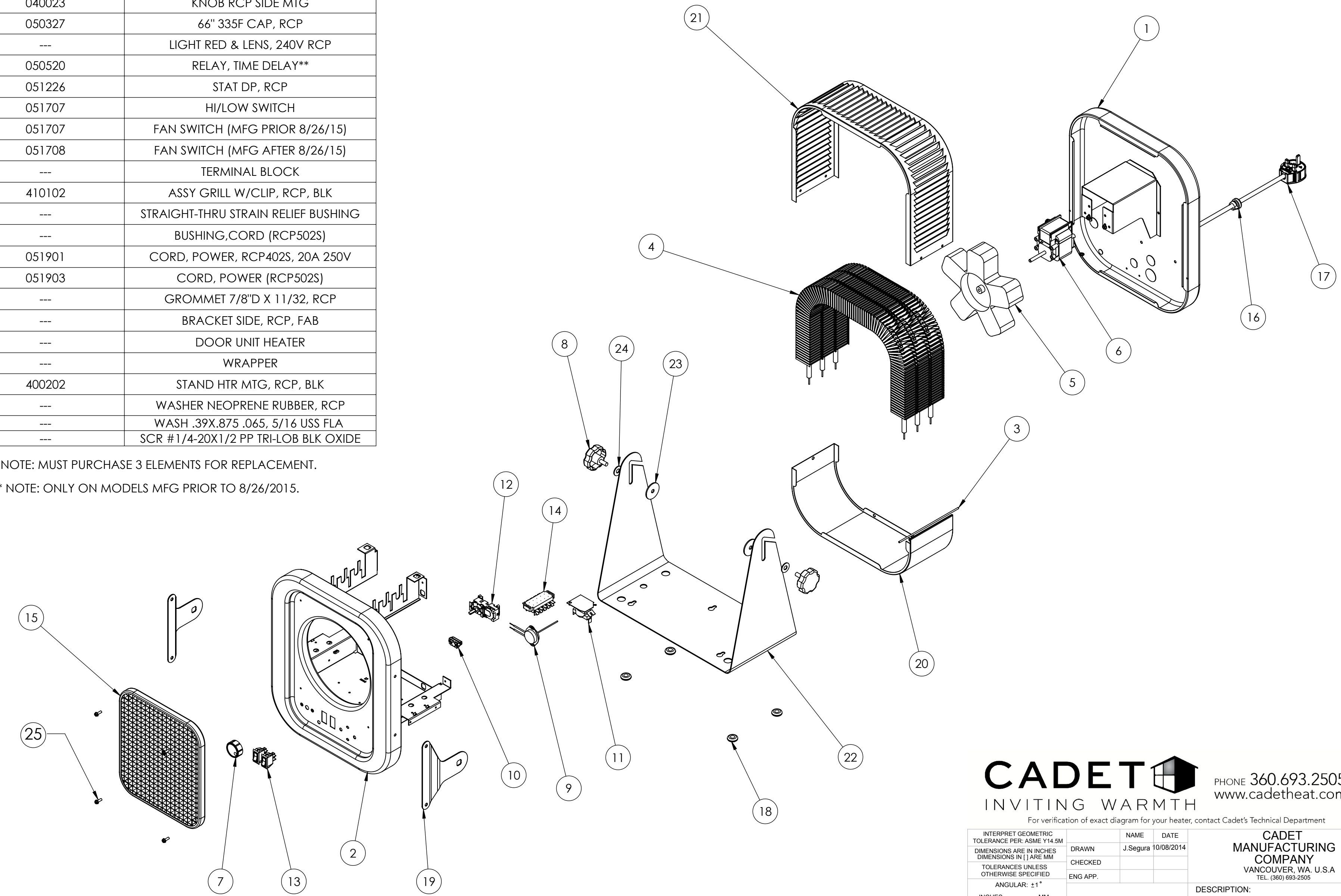


ITEM NO.	PART NUMBER	DESCRIPTION
1	---	ASSEMBLY PANEL REAR, RCP, RED
2	---	PANEL FRONT, RCP, FAB
3	---	HINGE PIN, RCP/CEH
4	401723	* ELEMENT RCP402S RCP
	401726	* ELEMENT RCP502S RCP
5	001601	BLADE FAN, RCP/CEH 3 & 5 KW
6	051424	MOTOR, RCP, 240V
7	040019	KNOB, RCP, STAT CONTROL
8	040023	KNOB RCP SIDE MTG
9	050327	66" 335F CAP, RCP
10	---	LIGHT RED & LENS, 240V RCP
11	050520	RELAY, TIME DELAY**
12	051226	STAT DP, RCP
13	051707	HI/LOW SWITCH
	051707	FAN SWITCH (MFG PRIOR 8/26/15)
	051708	FAN SWITCH (MFG AFTER 8/26/15)
14	---	TERMINAL BLOCK
15	410102	ASSY GRILL W/CLIP, RCP, BLK
16	---	STRAIGHT-THRU STRAIN RELIEF BUSHING
	---	BUSHING, CORD (RCP502S)
17	051901	CORD, POWER, RCP402S, 20A 250V
	051903	CORD, POWER (RCP502S)
18	---	GROMMET 7/8"D X 1 1/32, RCP
19	---	BRACKET SIDE, RCP, FAB
20	---	DOOR UNIT HEATER
21	---	WRAPPER
22	400202	STAND HTR MTG, RCP, BLK
23	---	WASHER NEOPRENE RUBBER, RCP
24	---	WASH .39X.875 .065, 5/16 USS FLA
25	---	SCR #1/4-20X1/2 PP TRI-LOB BLK OXIDE

REVISIONS					
ECN #	REV.	DESCRIPTION	DATE	DRAWN BY	APPROVED
2429	A	CREATED CD FOR EXPLODED DWG	10/08/2014	J.SEGURA	G.RALSTIN
2517	B	CHANGED FAN SWITCH PART NUMBER AFTER 8/26/15, REMOVED TIME DELAY RELAY AFTER 8/26/15	8/20/2015	A.PETERSON	D.CRACIUN

## THE HOT ONE RCP PARTS & ASSEMBLY DETAIL VIEW



\* NOTE: MUST PURCHASE 3 ELEMENTS FOR REPLACEMENT.  
 \*\* NOTE: ONLY ON MODELS MFG PRIOR TO 8/26/2015.

THE DOCUMENT IS THE PROPERTY OF CADET MANUFACTURING COMPANY AND MAY CONTAIN PROPRIETARY INFORMATION. BY ACCEPTING THIS INFORMATION, THE BORROWER AGREES THAT IT WILL NOT BE USED FOR ANY PURPOSE OTHER THAN FOR WHICH IT IS LOANED. IT MAY NOT BE REPRODUCED IN ANY MANNER AND SHOULD BE DESTROYED AFTER SERVING ITS INTENDED FUNCTION.

**CADET** INVITING WARMTH

PHONE 360.693.2505  
www.cadetheat.com

INTERPRET GEOMETRIC TOLERANCE PER: ASME Y14.5M		NAME	DATE	<b>CADET MANUFACTURING COMPANY</b> VANCOUVER, WA. U.S.A TEL. (360) 693-2505
DIMENSIONS ARE IN INCHES DIMENSIONS IN [ ] ARE MM		DRAWN	J.Segura 10/08/2014	
TOLERANCES UNLESS OTHERWISE SPECIFIED		CHECKED		
ANGULAR: ±1°		ENG APP.		DESCRIPTION:
INCHES		MATERIAL		RCP PARTS & ASSEMBLY DETAIL VIEW
.x ±.062	x ±1.5	FINISH		SIZE DWG. NO. 990001
.xx ±.030	.x ±.76	DO NOT SCALE DRAWING		REV B
.xxx ±.015	.xx ±.38			SCALE: 1:6
.xxxx ±.008	.xxx ±.20			990001.slddrw SHEET 1 OF 1